

KHM/KM, Multiboost and Moviboost Dual System



Moviboost Dual
For Commercial Building
Services Segment



Multiboost
For Domestic Segment



KHM/KM - Horizontal Multi-stage Pump

Design

KHM and KM are horizontal multistage, end suction centrifugal pumps. These are non-self-priming closed couple pumps. These pumps are coupled with line operated induction motor. These are available in single as well as three phase variants.

Features

- Robust Construction
- Compact Design
- Stainless steel(SS304)hydraulic components
- Low Vibrations and noise
- High reliability
- Service friendly
- Wide usage
- IP 55 motor
- Class F insulation

Working Conditions

- Medium temperature : +15°C ~ +70°C
- Environmental temperature : ≤ 50°C
- Maximum Suction lift = 3 mtr

Applications

- Single booster
- Multi-jet pumps
- Movi-Boost Dual
- Washing and cleaning
- Domestic water supply system
- Water treatment
- Temperature control
- Chemical industry
- Pharmaceutical industry

Operating data Parameters

For Single phase

- a) Supply Voltage : 220 V +10% -10%
- b) Frequency : 50 Hz ± 10%

For Three phase

- a) Supply Voltage : 380 V + 10% -10%
- b) Frequency : 50Hz ± 10%

Pump Description

Pump Type series

KHM: SS 304 Hydraulic component and CI FG 200 Suction and delivery casing

KM: SS 304 Hydraulic component and SS 304 Suction and delivery casing

*SS-316 Hydraulic components available on request

Nominal flow in m³/hr

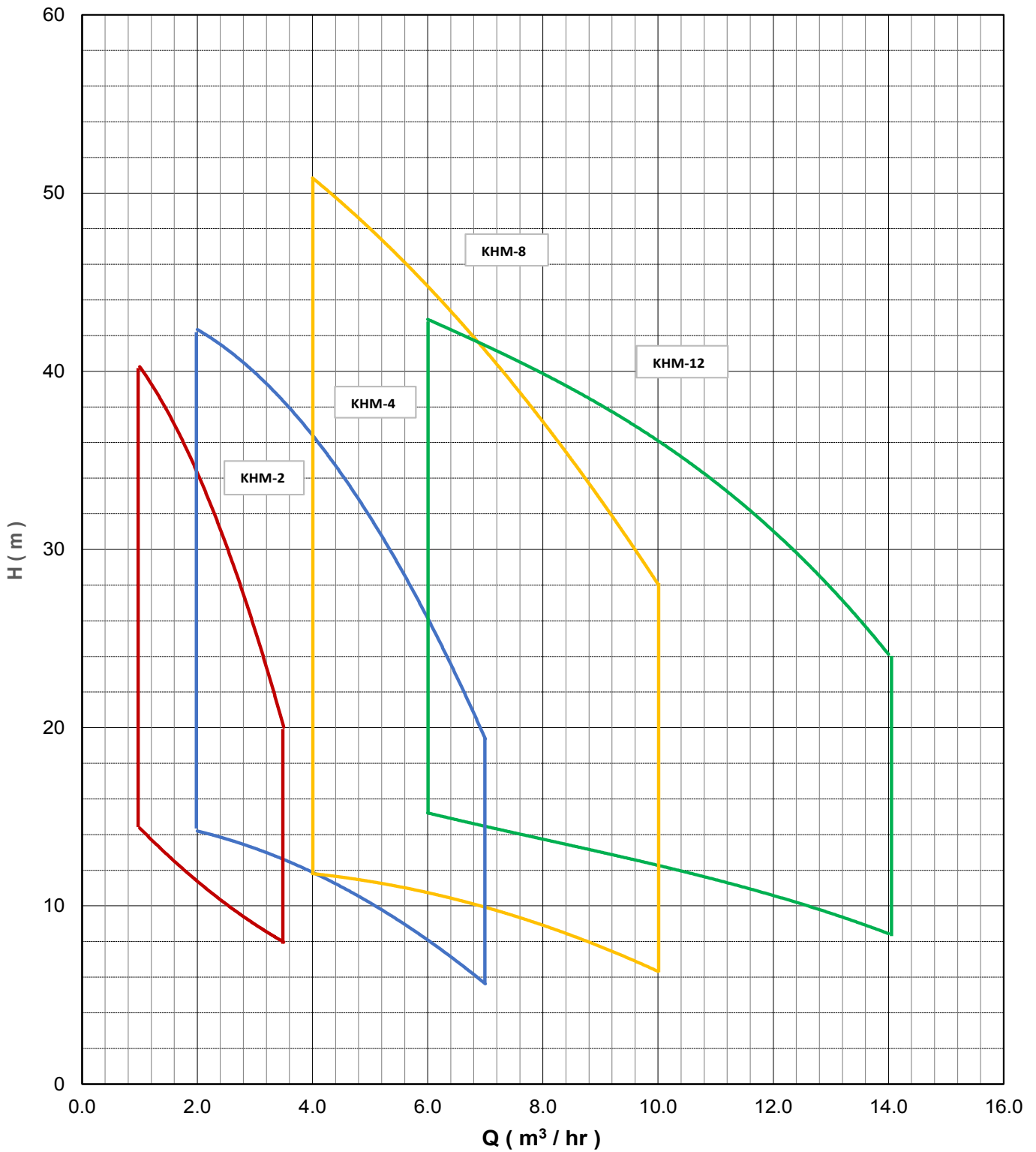
No. of Stages

Three Phase

KHM 4 20 T



KHM or KM (KSB Horizontal Multi-Stage pump)



Conversion factor

- 1 m = 3.28 ft
- 1 m³ / hr = 0.2778 lps
- 1 m³ / hr = 16.667 lpm
- 1 m³ / hr = 4.4028 gpm
- 1 m³ / hr = 3.6615 gpm (UK)

Performance Table

KHM/KM-2

Suction x Delivery (inches) = 1 x 1

Pump Type	No. Of Stages	Motor rating		Head Vs Discharge for Pump Type KHM - 2							
		kW	HP	Q-Discharge (m ³ / hr)	0.0	1.0	1.50	2.00	2.50	3.00	3.50
KHM2-20	2	0.37	0.50	Head (m)	16	14	13	11	10	9	8
KHM2-30	3	0.37	0.50		23	22	19	17	16	14	11
KHM2-40	4	0.55	0.75		31	28	26	22	21	18	14
KHM2-50	5	0.55	0.75		39	34	32	28	26	22	18
KHM2-60	6	0.75	1.00		45	40	38	34	30	26	20

KHM/KM-4

Suction x Delivery (inches) = 1.25 x 1

Pump Type	No. Of Stages	Motor rating		Head Vs Discharge for Pump Type KHM - 4							
		kW	HP	Q-Discharge (m ³ / hr)	0.0	2.0	3.0	4.0	5.0	6.0	7.0
KHM4-20	2	0.55	0.75	Head (m)	16	14	13	12	10	8	6
KHM4-30	3	0.75	1.00		24	22	20	18	15	12	8
KHM4-40	4	0.75	1.00		32	29	26	24	21	16	10
KHM4-50	5	0.75	1.00		38	35	33	30	26	21	16
KHM4-60	6	1.10	1.5		46	42	40	36	32	26	19

KHM/KM-8

Suction x Delivery (inches) = 1.5 x 1.25

Pump Type	No. Of Stages	Motor rating		Head Vs Discharge for Pump Type KHM - 8							
		kW	HP	Q-Discharge (m ³ / hr)	0.0	4.0	5.0	6.0	7.0	8.0	10.0
KHM8-10	1	0.55	0.75	Head (m)	14	12	11	10	10	10	6
KHM8-15	2	0.75	1.00		22	20	18	18	17	16	10
KHM8-20	2	1.10	1.50		27	26	23	22	20	19	14
KHM8-25	3	1.50	2.00		39	34	32	30	27	22	16
KHM8-30	3	1.50	2.00		45	40	37	35	32	29	21
KHM8-35	3	2.20	3.00		50	45	41	38	35	34	22
KHM8-40	4	2.20	3.00		54	52	46	46	40	38	27

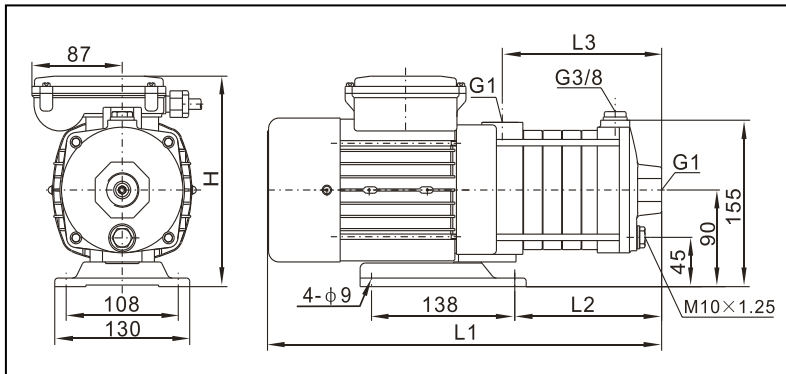
KHM/KM-12

Suction x Delivery (inches) = 1.5 x 1.25

Pump Type	No. Of Stages	Motor rating		Head Vs Discharge for Pump Type KHM - 12							
		kW	HP	Q-Discharge (m ³ / hr)	0.0	6.0	8.0	10.0	12.0	13.0	14.0
KHM12-10	1	1.10	1.50	Head (m)	16	15	14	12	11	10	8
KHM12-15	2	1.50	2.00		24	22	21	19	16	14	12
KHM12-20	2	1.50	2.00		32	30	28	25	22	19	16
KHM12-25	3	2.20	3.00		40	38	34	31	27	24	22
KHM12-30	3	3.00	4.00		48	43	40	36	31	28	24

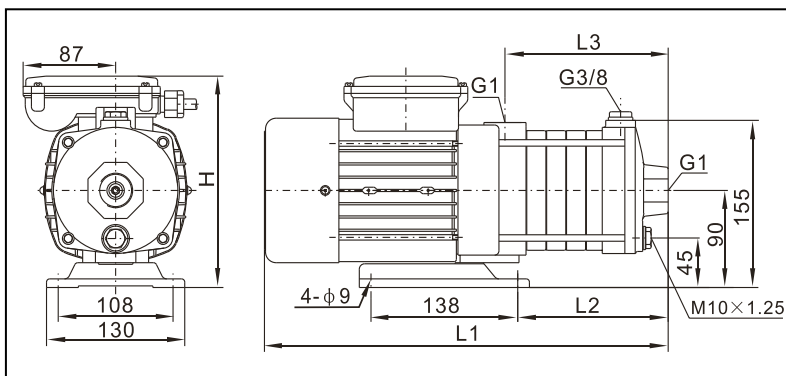
Dimensional details

KHM/KM-2



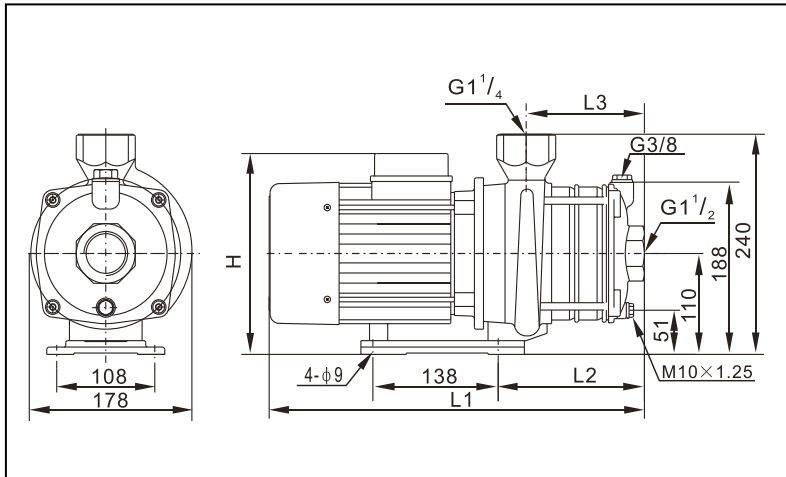
Pump Type	No. Of Stages	Single phase				Three phase				Weight (kg)
		L1	L2	L3	H	L1	L2	L3	H	
KHM2-20	2	326	70	104	198	326	70	104	194	9
KHM2-30	3	344	88	122	198	344	88	122	194	9
KHM2-40	4	362	106	140	198	362	106	140	194	10
KHM2-50	5	380	124	158	198	380	124	158	194	10
KHM2-60	6	398	142	176	198	398	142	176	194	11

KHM/KM-4



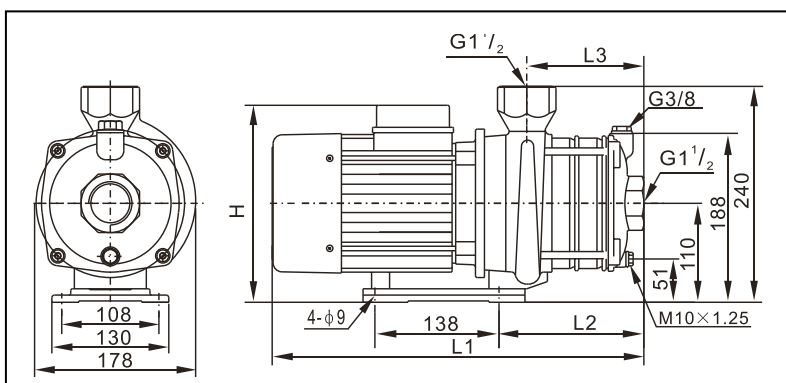
Pump Type	No. Of Stages	Single phase				Three phase				Weight (kg)
		L1	L2	L3	H	L1	L2	L3	H	
KHM4-20	2	335	79	113	198	335	79	113	194	9
KHM4-30	3	362	106	140	198	362	106	140	194	10
KHM4-40	4	389	133	167	198	389	133	167	194	11
KHM4-50	5	416	160	194	198	416	160	194	194	11
KHM4-60	6	443	187	221	198	443	187	221	194	12

KHM/KM-8



Pump Type	No. Of Stages	Single phase				Three phase				Weight (kg)
		L1	L2	L3	H	L1	L2	L3	H	
KHM0801	1	328	73	78	235	328	73	78	214	13
KHM0815	2	358	103	108	235	358	103	108	214	15
KHM0820	2	358	103	108	235	358	103	108	214	18
KHM0825	3	426	133	138	244	426	133	138	222	20
KHM8-30	3	468	133	138	230	426	133	138	222	25
KHM8-35	3	500	163	168	230	456	163	168	222	30
KHM8-40	4	500	163	168	230	456	163	168	222	31

KHM/KM-12



Pump Type	No. Of Stages	Single phase				Three phase				Weight (kg)
		L1	L2	L3	H	L1	L2	L3	H	
KHM12-10	1	328	73	78	235	328	73	78	214	15
KHM12-15	2	395	103	108	244	395	103	108	222	18
KHM12-20	2	436	103	108	230	395	103	108	222	20
KHM12-25	3	468	133	138	230	426	133	138	222	24
KHM12-30	3	-	-	-	-	485	133	138	23	27

Multiboost - Multistage Booster Pump

For Domestic Segment

Design

Multiboost is multistage monobloc pumps with squirrel cage induction motor. Multiboost comprises of pump with accumulator tank, pressure switch, pressure gauge and non-return valve.

Applications

- Suitable for water pressure boosting systems
- Multi-jet shower panels
- Domestic water supply systems
- Irrigation and small industrial water supply

Features

- Robust Construction
- Stainless steel (SS304) hydraulic components
- Low Vibrations and noise
- High reliability

Operating Data

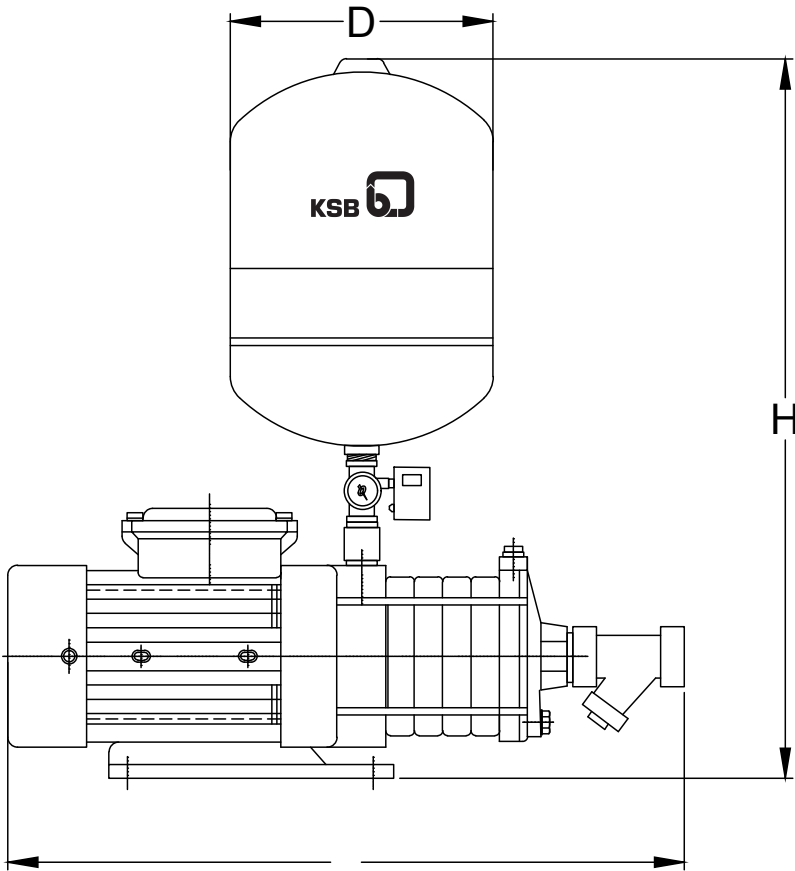
Pump sizes : 7 models
 Capacity : up to 8 m³/hr
 Head : up to 53 mtr
 Motor Power : up to 2.2 kW
 1Ø 220 Volts, 50 Hz



Operating Data

Model 220V/50Hz	Power (HP)	Q (LPH)	Suction x Delivery (mm)	1000	1500	2000	2500	3000	3500	No of 15 mm Shower heads
KHM0204	0.5	H	25 x 25	35	32	28	26	23	17	3
KHM0206	1		25 x 25	50	48	42	38	32	25	4
Model 220V/50Hz	Power (HP)	Q (LPH)	Suction x Delivery (mm)	2000	3000	4000	5000	6000	7000	No of 15 mm Shower heads
KHM0402	0.5	H	32 x 25	18	16	15	13	10	7	3
KHM0403	1		32 x 25	27	25	22	19	15	10	4
KHM0404	1		32 x 25	36	33	30	26	20	14	6
KHM0406	1.5		32 x 25	53	50	45	40	33	24	6
Model 220V/50Hz	Power (HP)	Q (LPH)	Suction x Delivery (mm)	4000	5000	6000	7000	8000	10000	No of 15 mm Shower heads
KHM0803	2		40 x 32	50	46	44	40	36	26	8

Dimensional drawing & details



Model	H	D	L
KHM0204	815	305	490
KHM0206	815	305	523
KHM0402	815	305	460
KHM0403	815	305	487
KHM0404	815	305	514
KHM0406	815	305	568
KHM0803	900	305	593



Moviboost Dual - Pressure Booster System

For Commercial Building Services Segment

Design

Moviboost Dual system is a pressure booster pump set with two identical horizontal multistage pumps connected in parallel to support the variable flow requirement. The system comes along with 2 nos. KSB's KHM/KM pumps including all necessary accessories & piping mounted on common base plate, 24L Global Water Tank (optional), 2 pressure switch or Changeover switch and control panel.

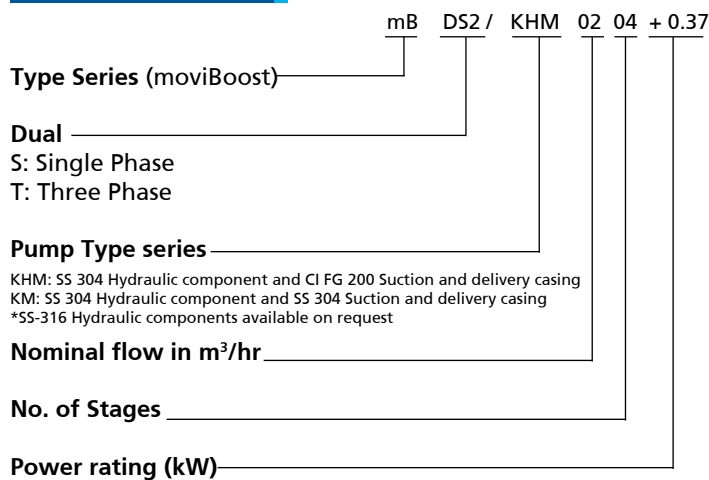
Features

- Robust Construction
- Compact Design
- Stainless steel (SS304) hydraulic components
- Low Vibrations and noise
- High reliability
- Service friendly
- Wide usage
- IP 55 motor
- Class F insulation

Working Conditions

- Medium temperature : +15°C ~ +70°C
- Environmental temperature : ≤ 50°C

Pump Description



Operating data Parameters

For Single phase

- a) Supply Voltage : 220 V +10% -10%
 b) Frequency : 50 Hz ± 10%

For Three phase

- a) Supply Voltage : 380 V +10% -10%
 b) Frequency : 50Hz ± 10%

Pump protections

- Overload : Overload relay
- Short Circuit protection
- Dry run : Suction tank float switch / Pressure Switch (Provided loose. To be installed by customer)

Functional Details

- Two KHM horizontal multi stage, centrifugal, non-self-priming Monobloc pumps are used.
- Auto Mode : Pumps cascading through pressure switch, pumps may run in parallel also depending on pressure.
- Manual Mode : Pumps will run at full speed through optional switches provided for setting in manual mode.
- System operates automatically cascade control as function of pressure.
- Two pressure switches are provided for cut-in and cut-out of pumps within prescribed pressure range.
- MS CED coated headers which offers high corrosion resistance.
- Pressure gauge is provided for system pressure indication.
- Overload protection is by thermal overload protection (TOP-in motor for single phase) and over load relay (OLR).
- Dry run protection is provided with help of float switch (optional - Level sensor).
- Factory fitted System.
- Fault indication for over load & dry run.
- IP Protection:
Control Panel : IP 54
Motor : IP 55
- Indication for each pump ON / OFF is provided.
- Indication of power ON/OFF is provided

Scope of Supply

Nos of Pumps	2 Nos.
Cascade control panel	1 Nos
Suction Headers/ Manifold	1 Nos.
Pressure Switch	2 Nos.
Pressure gauge	1 Nos.
Float Switch	1 Nos.
Tank	1 Nos. (optional)
Electronic dry run protection	Optional
Change over switch	Optional

List of indicators

- Power On : Green Illuminated
 Pump On / Off : Amber Illuminated
 Fault Condition : Amber Illuminated

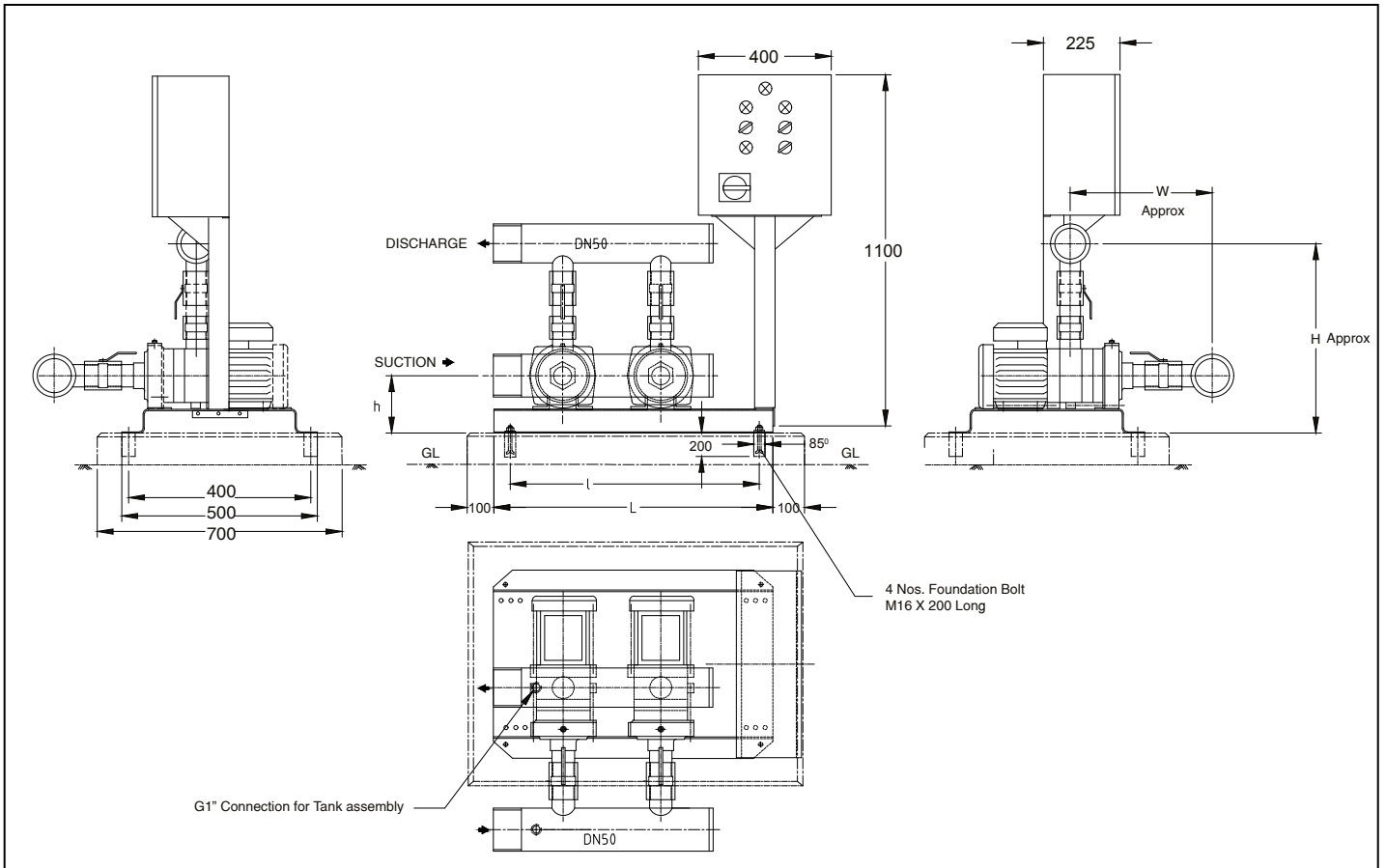


Applications

- Single booster
- Domestic water supply system
- Multi-jet pumps
- Temperature control
- Chemical industry
- Pharmaceutical industry
- Water treatment
- Washing and cleaning



Dimensional drawing & details



L3 (W)	MODEL	L	I	H	W	h
104	KHM2-20	560	470	593.5	288.5	150
122	KHM2-30	560	470	593.5	288.5	150
140	KHM2-40	560	470	593.5	288.5	150
158	KHM2-50	560	470	593.5	288.5	150
176	KHM2-60	560	470	593.5	288.5	150

L3 (W)	MODEL	L	I	H	W	h
113	KHM4-20	560	470	593.5	299.5	150
140	KHM4-30	560	470	593.5	299.5	150
167	KHM4-40	560	470	593.5	299.5	150
194	KHM4-50	560	470	593.5	299.5	150
221	KHM4-60	560	470	593.5	299.5	150

L3 (W)	MODEL	L	I	H	W	h
78	KHM8-10	790	700	697.5	312	170
108	KHM8-15	790	700	697.5	312	170
108	KHM8-20	790	700	697.5	312	170
138	KHM8-25	790	700	697.5	312	170
138	KHM8-30	790	700	697.5	312	170
168	KHM8-35	790	700	697.5	312	170
168	KHM8-40	790	700	697.5	312	170

L3 (W)	MODEL	L	I	H	W	h
78	KHM12-10	790	700	697.5	312	170
108	KHM12-15	790	700	697.5	312	170
108	KHM12-20	790	700	697.5	312	170
138	KHM12-25	790	700	697.5	312	170
138	KHM12-30	790	700	697.5	312	170

KSB Pumps and Valves - We are where you are

Manufacturing Plants :

Head Office & Pimpri :
Irrigation & Process Division
Mumbai-Pune Road, Pimpri,
Pune - 411 018.
Tel.: 020-2710 1000 Fax : 020-2742 6000

Chinchwad :
Power Projects Division
D-II Block, MIDC Chinchwad,
Pune - 411 019.
Tel.: 020-2740 9100 Fax : 020-2747 0890

Khandala :
Energy Pumps Division
A1, MIDC Khandala Phase II,
Village Kesurdi, Tal. Khandala,
Satara - 412 802.
Tel. : 02169 -246800

Coimbatore :
Valves Division
151, Mettupalayam Road,
NSN Palayam Post,
Coimbatore - 641 031.
Tel.: 0422-2468222, 2468547-9
Fax : 0422-2468232

Sinnar :
Standard Pumps Division
Plot No. E-3 & E-4, MIDC Sinnar,
Nashik - 422 113.
Tel.: 02551-230252 / 53, 229700
Fax : 02551-230254

Vambori :
Foundry Division
Vambori, Ahmednagar - 413 704.
Tel.: 02426-272534, 272550, 272463
Fax : 02426-272043

Regd. Office :
Office No. 601, Runwal R-Square,
L.B.S. Marg, Mulund (West),
Mumbai- 400 080,
Tel.: 022-2168 1300

Zonal Offices :

East :
30, Circus Avenue, 2nd Floor,
Kolkata - 700 017.
Tel.: 033-2287 0473, 2290 0117
Fax : 033-2287 0588

West :
Office No. 601, Runwal R-Square,
L.B.S. Marg, Mulund (West),
Mumbai- 400 080
Tel.: 022-2168 1300

North :
KSB House, A-96, Sector IV, NOIDA,
Dist. Gautam Budh Nagar - 201 301.
Tel.: 0120-2471 600
Fax : 0120-255 0567

South :
Guindy House, II Floor, # 92 Anna Salai,
Chennai - 600 032.
Tel.: 044-2235 2571-2, 2235 5673
Fax : 044-2235 2749

Service Stations :

Chennai :
6, Self-help Industrial Estate,
Keelkattalai, Near Keelkattalai -
Pallavaram Radial Road Signal junction,
Chennai 600 117
Tel. 044-22681159

Howrah :
Sadananda Industrial Estate
Howrah Amta Road, Balitikuri,
Bakultala
Howrah - 711 113, West Bengal

NOIDA :
KSB House, A-96, Sector IV, NOIDA,
Dist. Gautam Budh Nagar - 201 301.
Tel.: 0120-2471 600
Fax : 0120-255 0567

Odhav :
Shed No. 22, Gujarat Vepari
Mahamandal, Odhav,
Ahmedabad - 382 410.
Tel.: 079-2290 0372
Fax : 079-2290 0749

Branch Offices :

Ahmedabad :
Shed No. 22, Gujarat Vepari
Mahamandal, Odhav,
Ahmedabad - 382 410.
Tel.: 079-2290 0707, 2290 0717

Aurangabad :
Plot No. P-204, Shivshankar Colony,
Near Hotel Sayli,
Aurangabad - 431 005.
Tel.: 0240-235 1440, 234 2447
Fax : 0240-235 1440

Bangalore :
191, 1st Floor, West Of Chord Road,
II Stage, Bangalore - 560 086.
Tel.: 080-2349 1806, 2349 3925
Fax : 080-2349 6036

Baroda :
4-B, Ramkrishna Chamber,
Productivity Road, Baroda - 390 005.
Tel.: 0265-233 0532, 233 3226
Fax : 0265-235 0002

Bhubaneswar :
N5/39, 1st Floor, IRC Village, Nayapalli,
Bhubaneswar - 751 015.
Tel.: 0674-255 8497
Fax : 0674-255 8499

Chandigarh :
SCO - 189, 2nd Floor, Sector - 7C,
Chandigarh - 160 019.
Tel. / Fax : 0172-279 0072, 279 0062

Indore :
Office No 104, 1st Floor, Fortune
Ambience, 4/2 South Tukogunj
Indore - 452001
Tel.: 0731- 4216704, 4216705

Jaipur :
Anjali Chambers, 2nd Floor, Block C,
10, Rajbhawan Road, Civil Lines,
Jaipur - 302 001.
Tel.: 0141-222 4554, 222 4904
Fax : 0141-222 4904

Jamshedpur :
Flat No: 3/1, 3rd Floor, Plot No: 20,
Road No: 2, Sonari West Layout,
Jamshedpur - 831011.
Tel.: 0657-231 4012, 231 4011
Fax : 0657-231 7128

Lucknow :
309, Chintels House, 16, Station Road,
Lucknow - 226 001.
Tel.: 0522-263 5203, 263 5597
Fax : 0522-263 5597

Mumbai :
Office No. 601, Runwal R-Square,
L.B.S. Marg, Mulund (West),
Mumbai- 400 080
Tel.: 022-2168 1300

Nagpur :
203, Suryakiran Complex, Bajaj Nagar,
Nagpur - 440 010.
Tel.: 0712-223 6889, 222 9148
Fax : 0712-222 9148

Pune :
Mumbai-Pune Road, Pimpri,
Pune - 411 018.
Tel.: 020-2710 1000 Fax : 020-2742 6000

Raipur :
E-5, Sector-5, Devender Nagar, Raipur,
Chhattisgarh - 492009
Tel.: 0771-258 3658, 258 3921
Fax : 0771-258 3921

Secunderabad :
D. No. 12-13-197, 198,
Flat No. 103 & 104, 1st Floor,
Pavani Anusuya Towers, Tarnaka,
Secunderabad - 500 017.
Tel.: 040-2700 1724, 2700 3696
Fax : 040-2700 1725

Thrissur :
4/227-4, Eravath Lane,
East Fort.P.O., Thrissur - 680005
Tel.: 0487 6065657



KSB Limited
Standard Pumps Division
Plot No. E-3 & E-4, MIDC Sinnar, Nashik - 422 113.
Tel.: +91-2551-230252 / 53, 229700 www.ksbindia.co.in

Our toll free no : 1800 233 1299
(Mon-Sat. 8 am to 10 pm)

Mktg. Services / 09 -19 / 1000